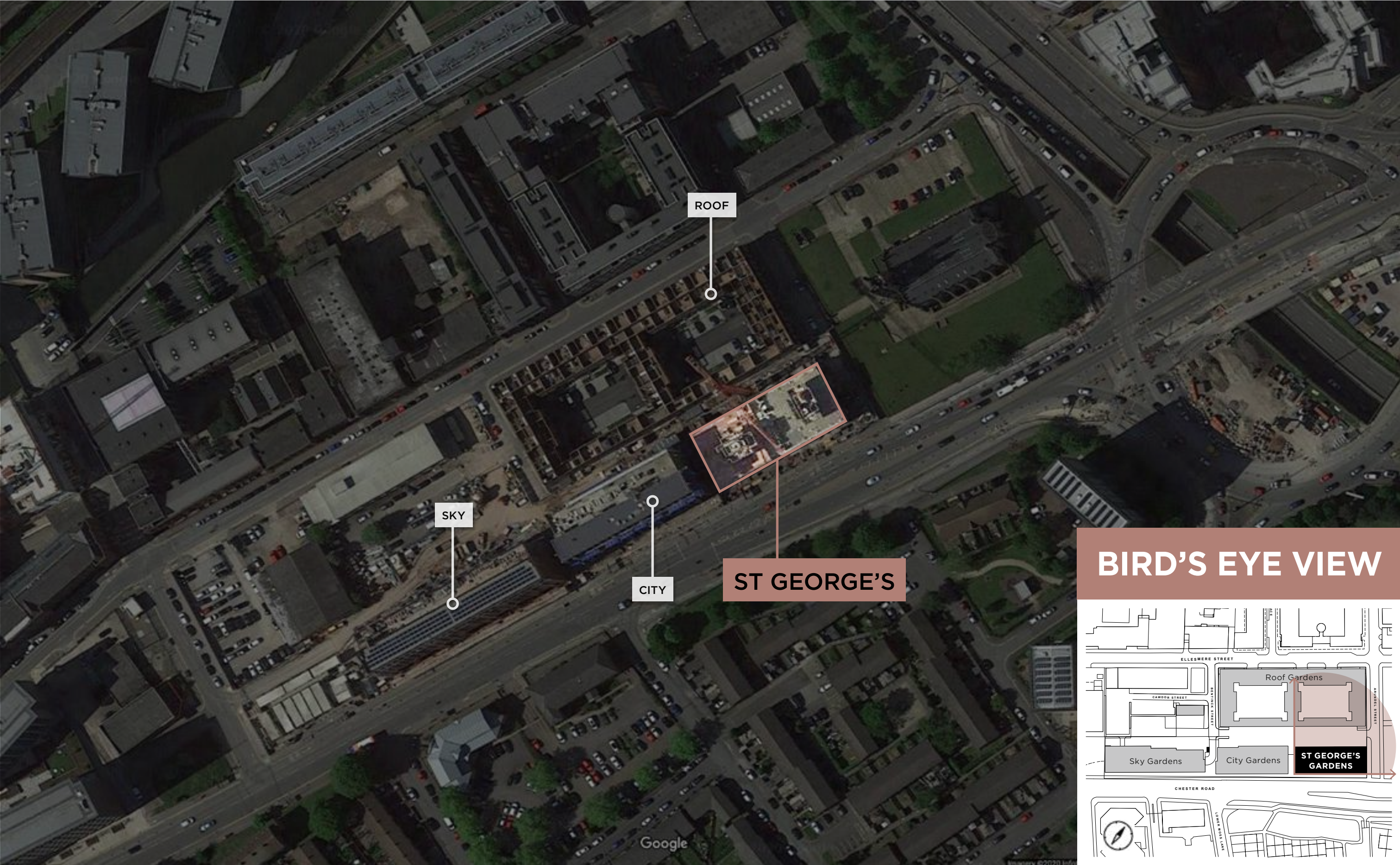


STGEORGE'S GARDENS
PHASE 4

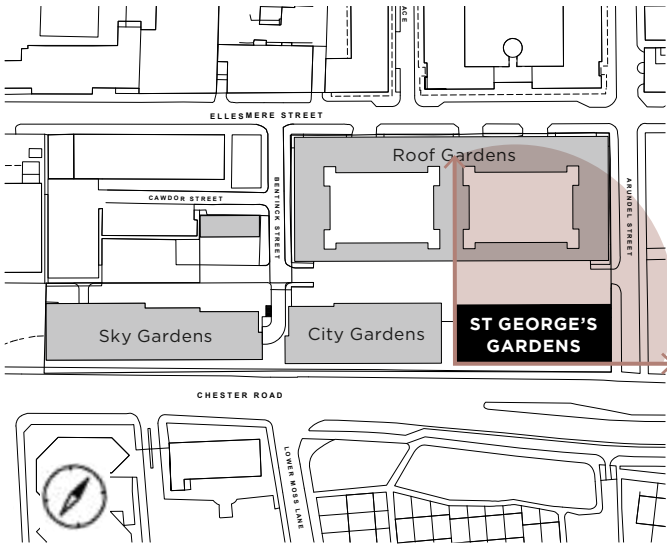
ASPECT KIT

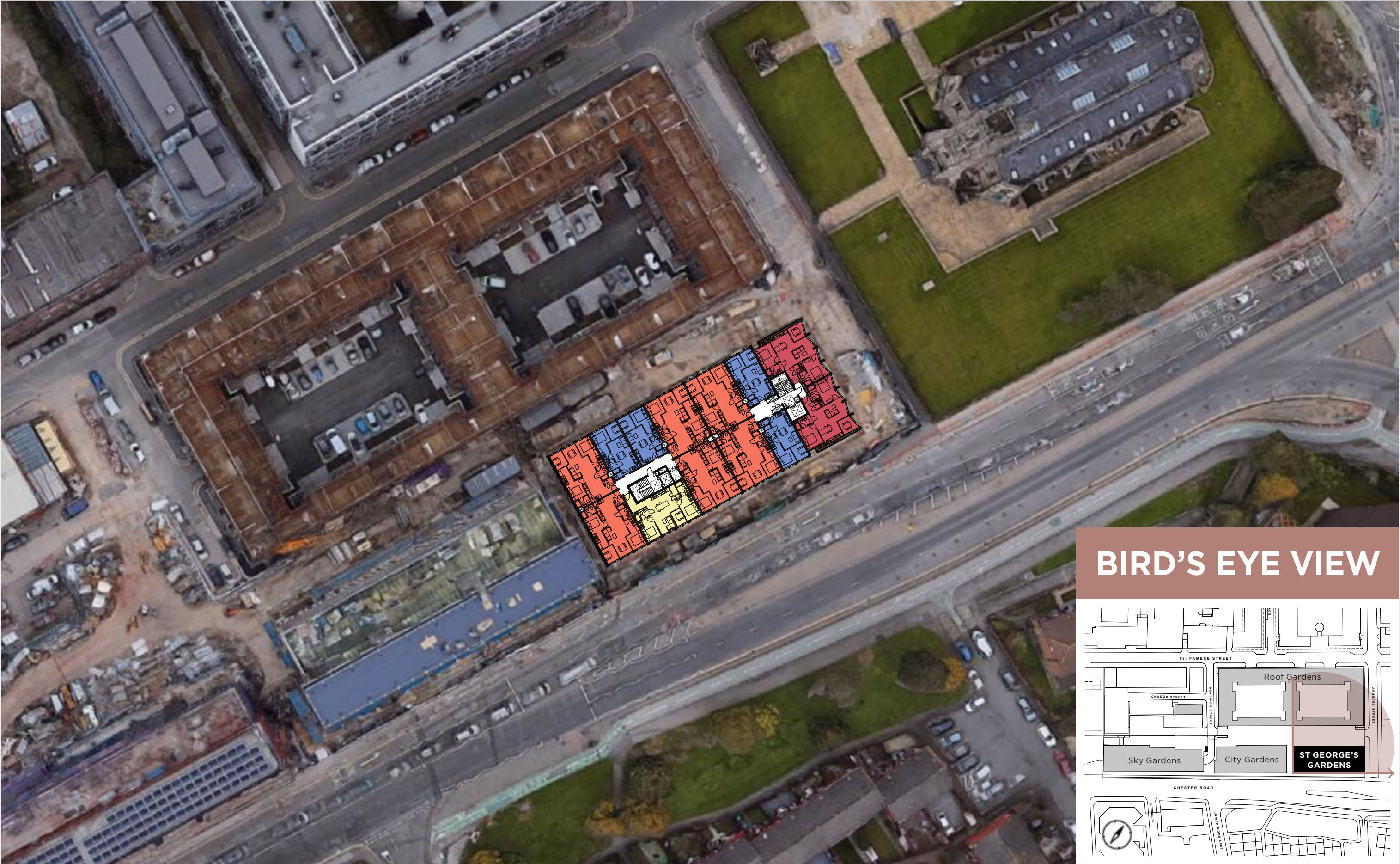
TO BE USED IN CONJUNCTION WITH FLOOR PLANS

DETRAFFORD

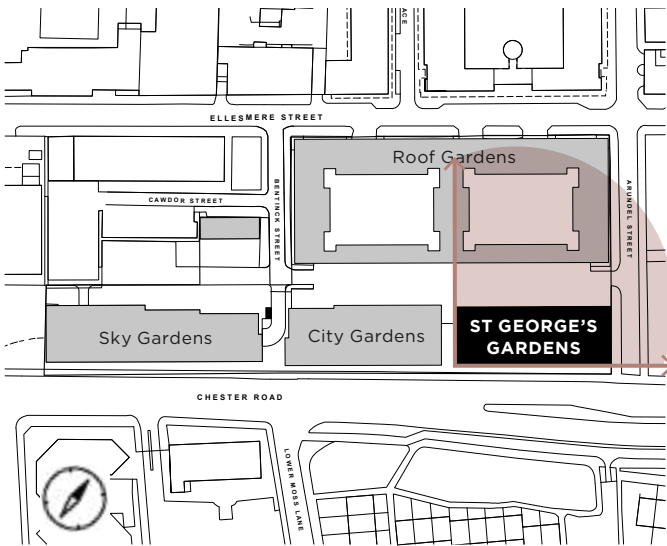


BIRD'S EYE VIEW





BIRD'S EYE VIEW

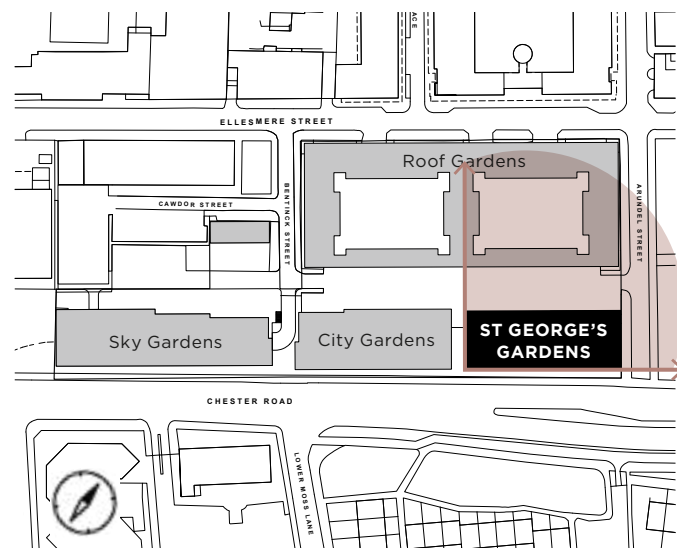




SPINNINGFIELDS / CENTRAL FINANCIAL DISTRICT

CASTLEFIELD

NORTH VIEW



ST

GEORGE'S

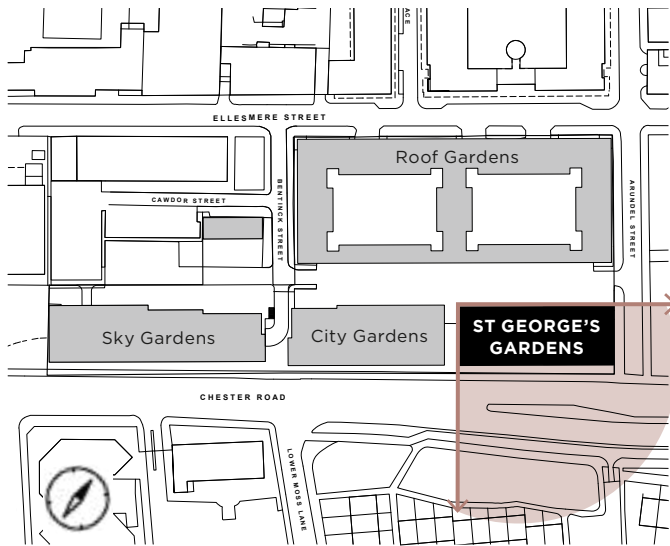
GARDENS

PHASE 4

DeTRAFFORD



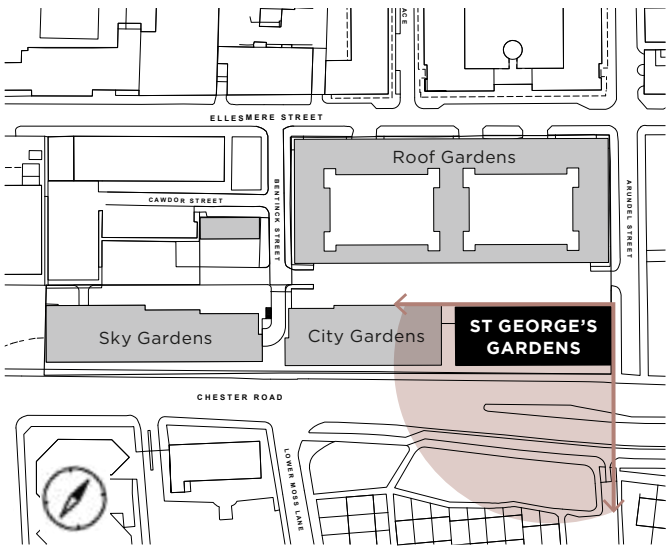
EAST VIEW



Theses images are are intended to provide a general indication of the proposed development at St George's Gardens. The content has been produced prior to the completion of St George's Gardens. The images presented are meant as a guide to the development. Unauthorized use, reproduction or distribution of these images is strictly prohibited. DeTrafford reserves the right to alter any part of the St George's Gardens development, specification or floor layouts, at any time. The information provided herein is believed to be correct but is not guaranteed. The contents shall not form part of any contract or of a representation inducing any such contract. Please note, images have been taken at 120m in height and do not represent a specific unit view.



SOUTH VIEW

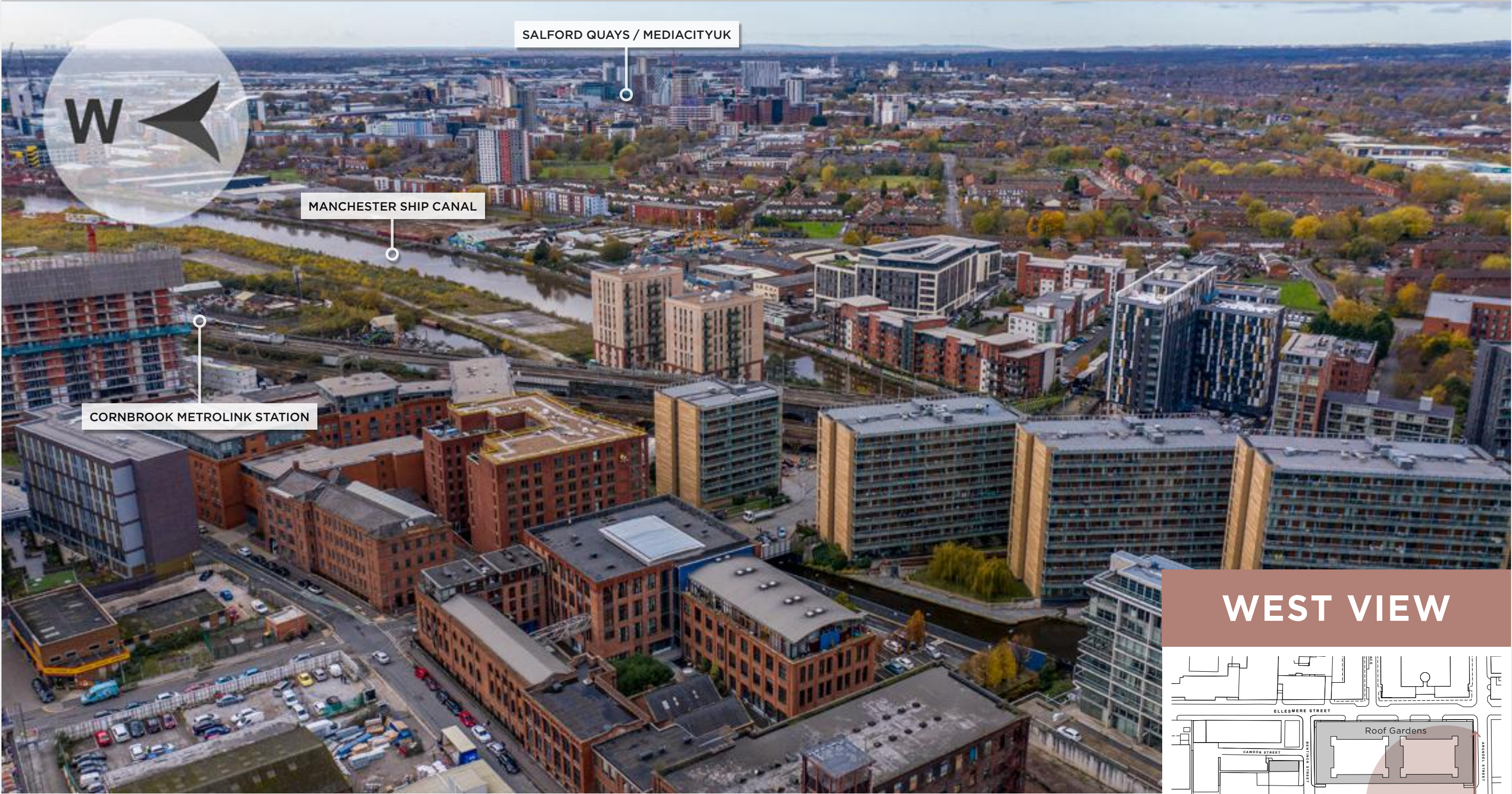


These images are intended to provide a general indication of the proposed development at St George's Gardens. The content has been produced prior to the completion of St George's Gardens. The images presented are meant as a guide to the development. Unauthorized use, reproduction or distribution of these images is strictly prohibited. DeTrafford reserves the right to alter any part of the St George's Gardens development, specification or floor layouts, at any time. The information provided herein is believed to be correct but is not guaranteed. The contents shall not form part of any contract or of a representation inducing any such contract. Please note, images have been taken at 120m in height and do not represent a specific unit view.

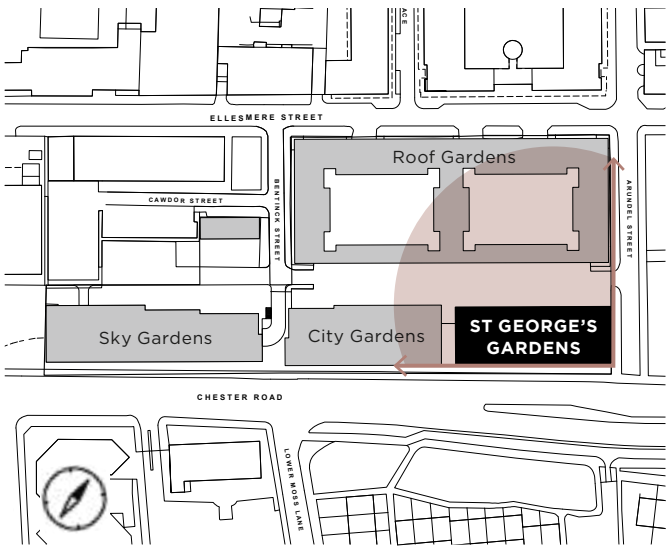
ST GEORGE'S GARDENS

PHASE 4

DeTRAFFORD



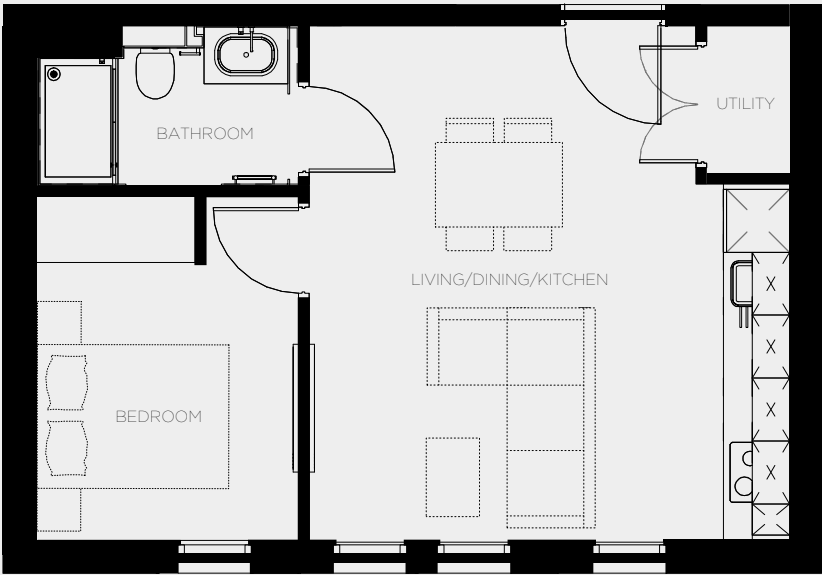
WEST VIEW



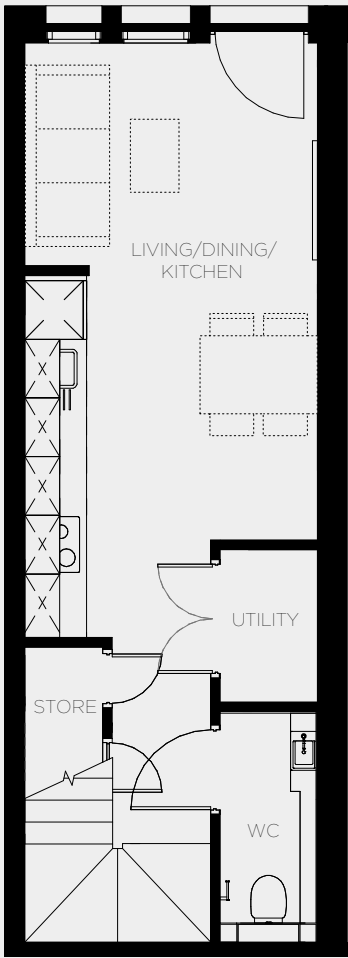
These images are intended to provide a general indication of the proposed development at St George's Gardens. The content has been produced prior to the completion of St George's Gardens. The images presented are meant as a guide to the development. Unauthorized use, reproduction or distribution of these images is strictly prohibited. DeTrafford reserves the right to alter any part of the St George's Gardens development, specification or floor layouts, at any time. The information provided herein is believed to be correct but is not guaranteed. The contents shall not form part of any contract or of a representation inducing any such contract. Please note, images have been taken at 120m in height and do not represent a specific unit view.

TYPICAL FLOOR PLANS

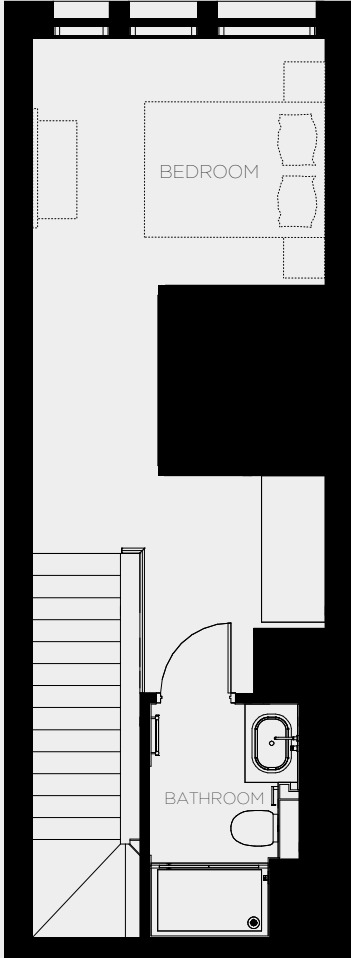
TYPE 1B



TYPE 1C

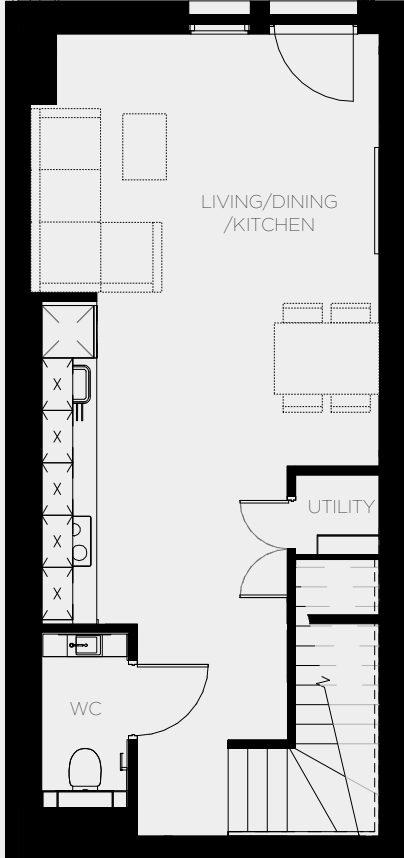


GROUND FLOOR

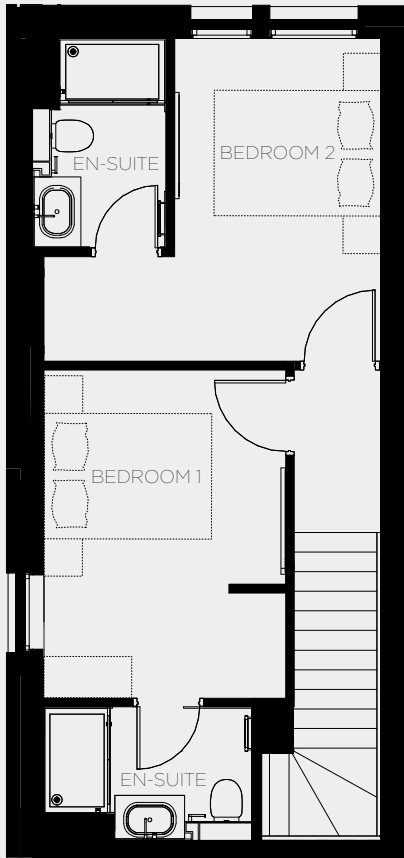


FIRST FLOOR

TYPE 2E

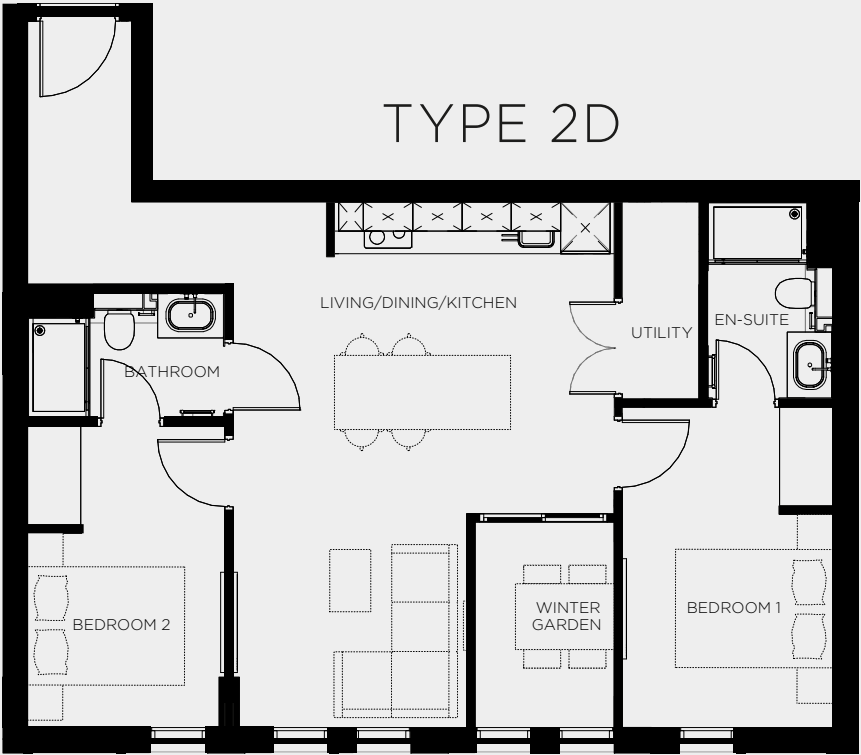


GROUND FLOOR



FIRST FLOOR

TYPE 2D



TYPICAL INTERIORS



Beech paneled walls and Italian concrete effect flooring, combined with a natural colour palette, creating a distinctive design in this scandinavian themed home.

CONTACTS

FOR ALL SALES ENQUIRIES AND TO REQUEST
FURTHER INFORMATION REGARDING ST GEORGE'S
GARDENS PLEASE CONTACT:

T: +44 (0) 161 639 0055

E: sales@detrafford.com

Brooke Court, Lower Meadow Road,
Wilmslow, Cheshire, SK9 3ND

www.detrafford.com