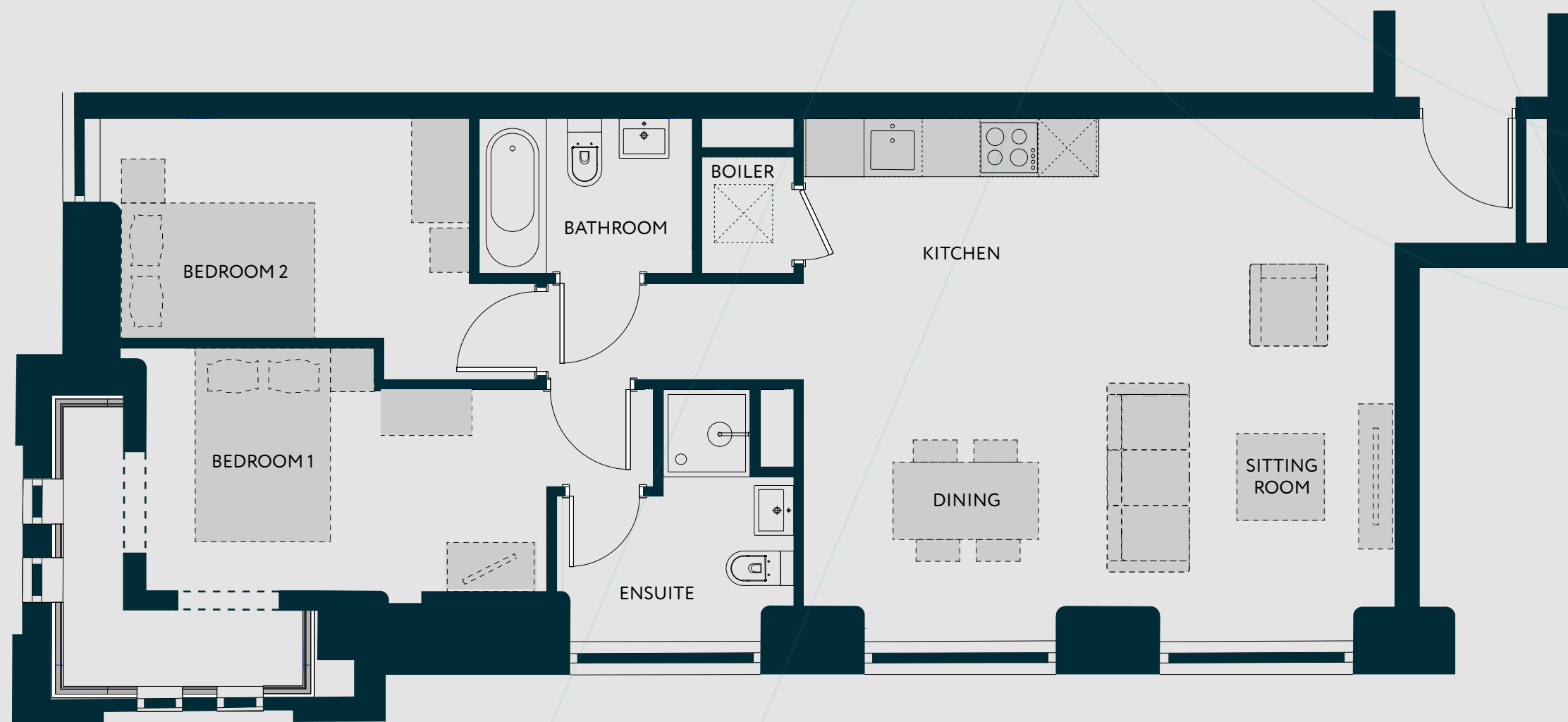


ELISABETH GARDENS, REDDISH - APARTMENT TYPE 2B



Elisabeth Gardens is a suburban community with a cosmopolitan feel, offering commanding views over the Houldsworth Golf Course. Its close proximity to Manchester city centre and nearby transport links help to ensure its position as a community poised to thrive.

Kitchen/Dining/Sitting - 6.11m x 5.40m
Bedroom 1 - 4.14m x 2.50m
Bedroom 1 Ensuite - 2.45m x 2.60m
Bedroom 2 - 3.59m x 2.27m
Bathroom - 2.20m x 1.60m

There are some instances where ceiling heights may vary. Please enquire for more information on this.

ELISABETH
GARDENS

ELISABETH GARDENS, REDDISH - APARTMENT TYPE 2B



Light and contemporary urban spaces, characterised by original exposed features and oak timber floors, complemented by a palette of subtle tones.

ELISABETH
GARDENS