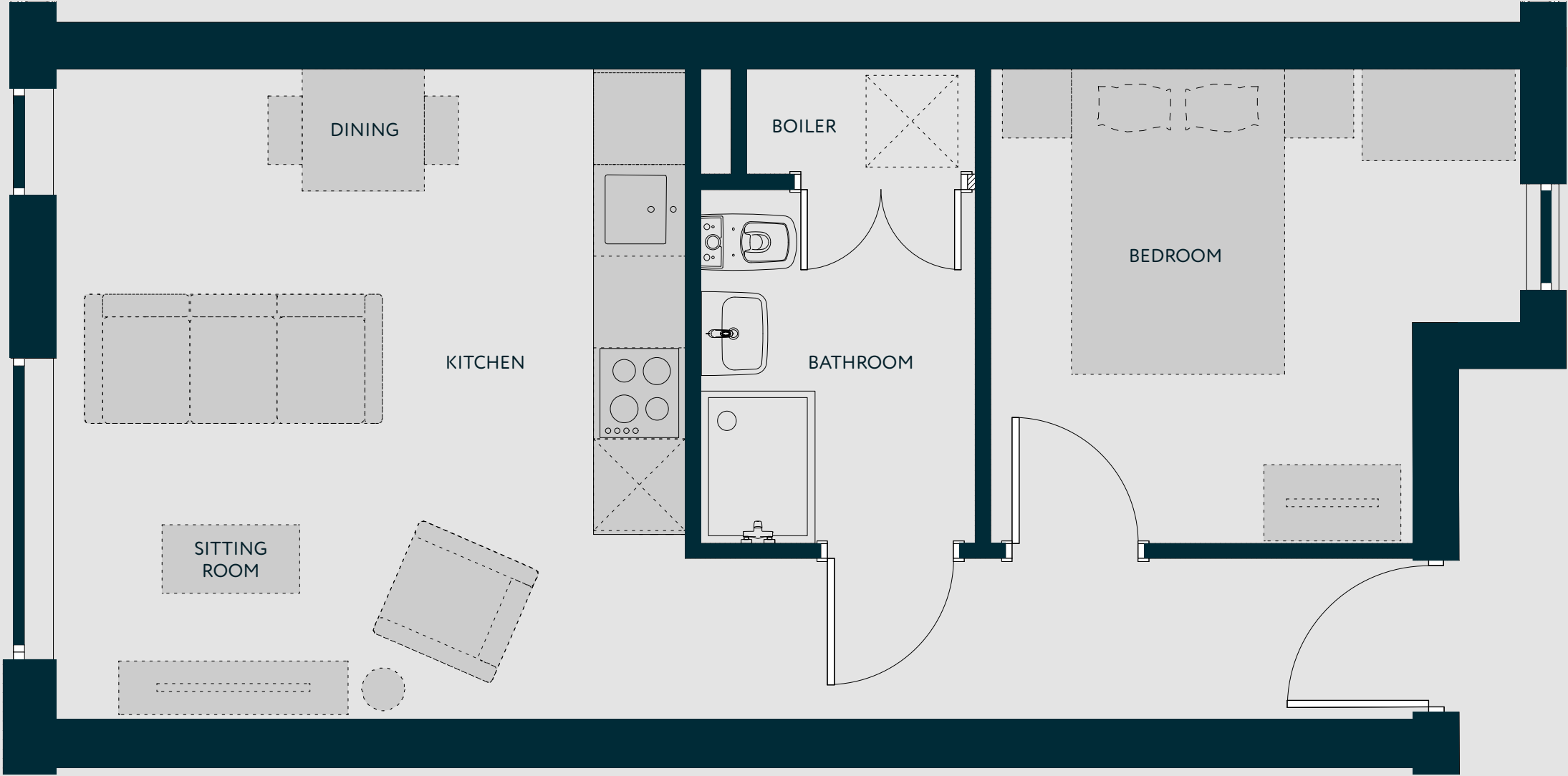


ELISABETH GARDENS, REDDISH - APARTMENT TYPE 1E



Elisabeth Gardens is a suburban community with a cosmopolitan feel, offering commanding views over the Houldsworth Golf Course. Its close proximity to Manchester city centre and nearby transport links help to ensure its position as a community poised to thrive.

Kitchen/Dining/Sitting - 4.12m x 4.27m
Bedroom - 3.47m x 3.11m
Bathroom - 1.80m x 2.32m

There are some instances where ceiling heights may vary. Please enquire for more information on this.

ELISABETH
GARDENS

ELISABETH GARDENS, REDDISH - APARTMENT TYPE 1E



Light and contemporary urban spaces, characterised by original exposed features and oak timber floors, complemented by a palette of subtle tones.

ELISABETH
GARDENS