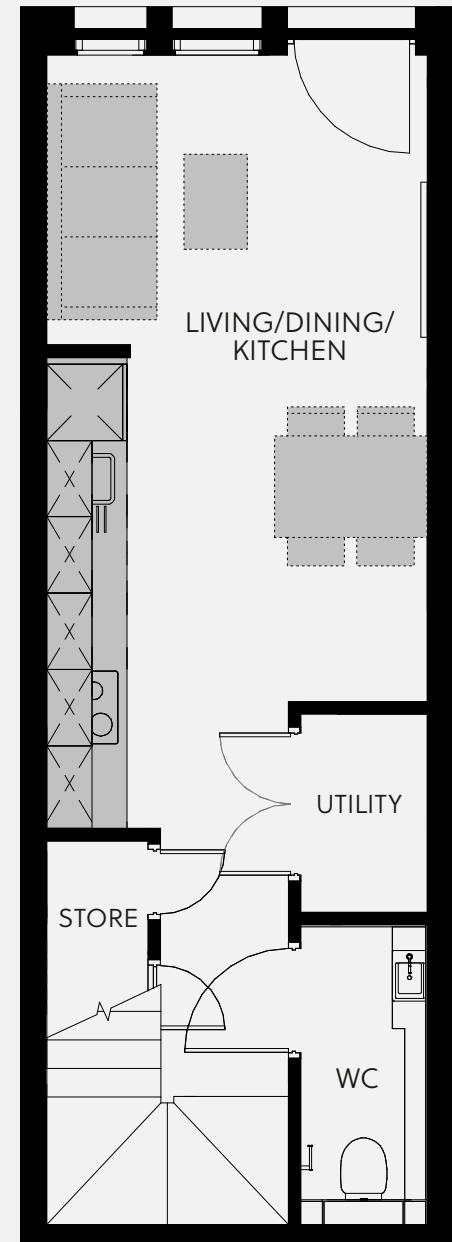
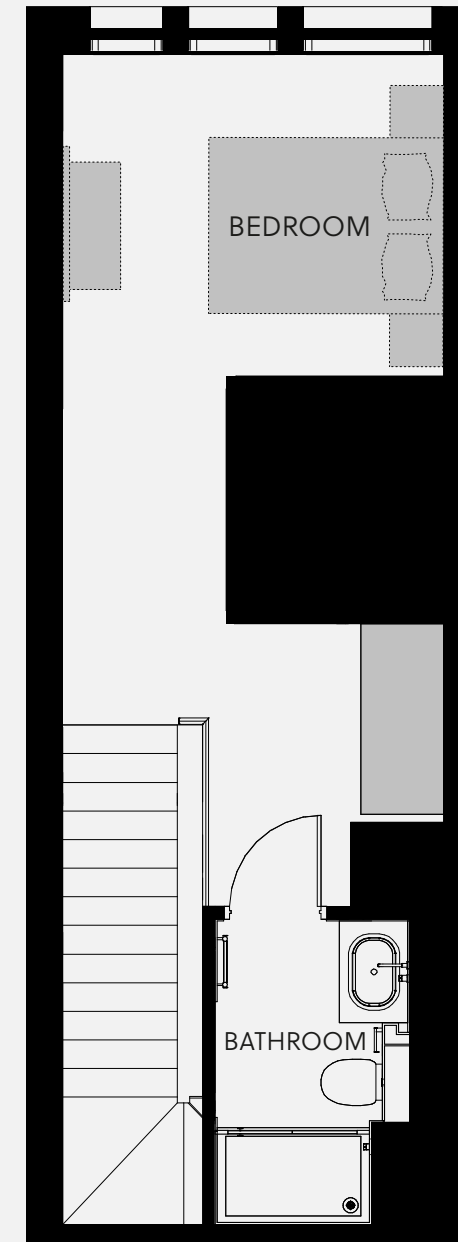


# ST GEORGE'S GARDENS - APARTMENT 1C

## TYPICAL LAYOUT



GROUND FLOOR



FIRST FLOOR

With unrivalled views over the Grade II listed church from which its name is derived, this stunning new Castlefield development offers a luxurious approach to city centre living.

**Living/Dining/Kitchen** - 2.995m x 6.079m

**Bedroom** - 2.995m x 5.266m

**Bathroom** - 1.530m x 2.400m

All measurements taken from the widest point in a room.

**Utility** - 1.005m x 1.555m

**WC** - 1.005m x 2.355m

There are some instances where ceiling heights may vary. Please enquire for more information on this.

**ST GEORGE'S** GARDENS  
PHASE 4

# ST GEORGE'S GARDENS - APARTMENT 1C

## TYPICAL LAYOUT



Walnut accented wall paneling and classic herringbone flooring, complemented by matt black ironmongery adding a contemporary twist to this unique space.

**ST GEORGE'S** GARDENS  
PHASE 4