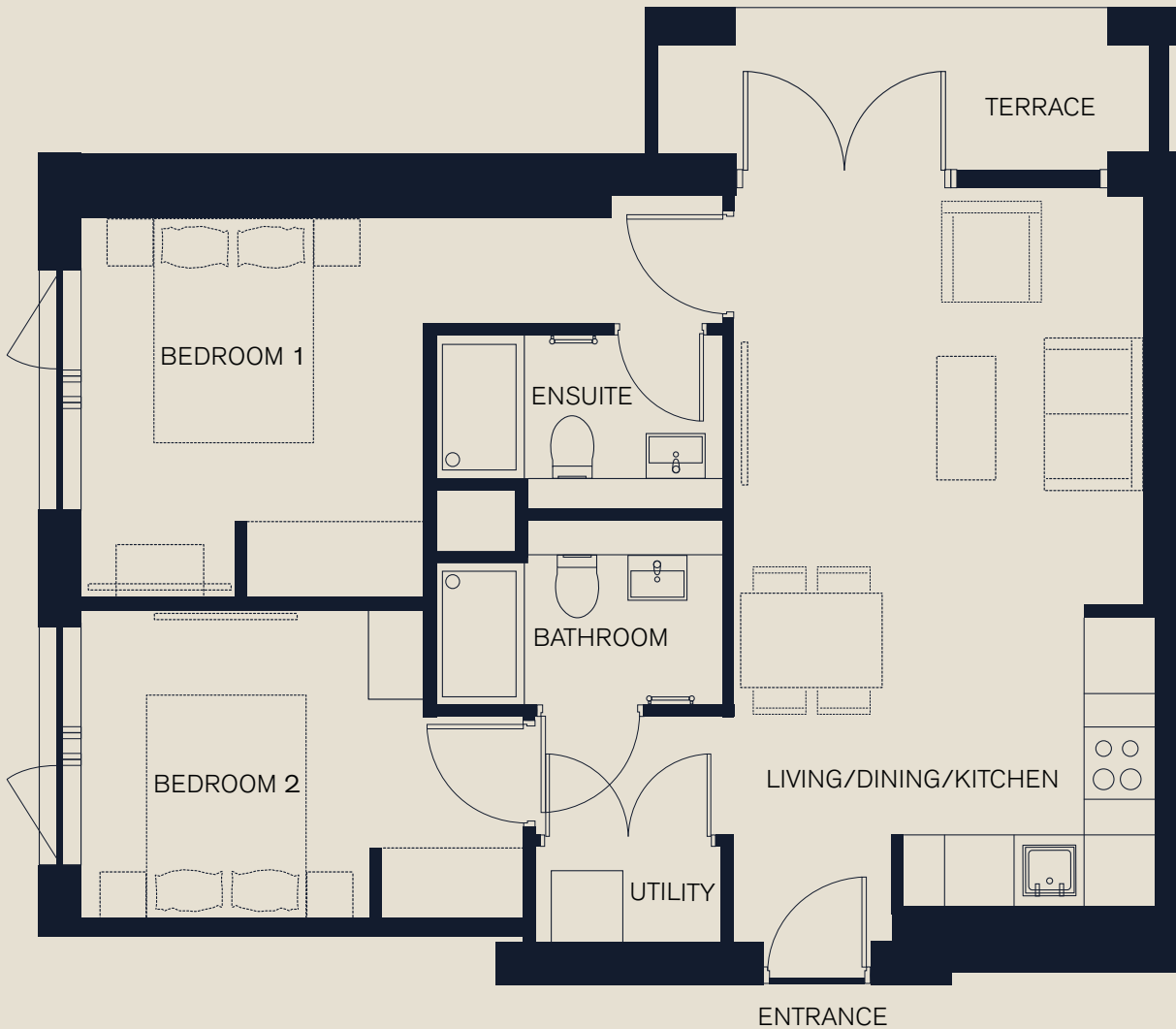


# No1 CASTLEFIELD - MILL APARTMENT D 2D TYPICAL LAYOUT

The red brick facade of our new No1 Castlefield development, respectfully complements the scale and appearance of the neighbouring buildings while the site is sympathetically framed by a 16 storey tower at the rear, crowned with private roof terraces.



GROUND FLOOR

- LIVING/DINING/KITCHEN** – 6.046m x 3.589m (23.3m<sup>2</sup>)

**BEDROOM 1** – 5.458m x 3.491m (11.8m<sup>2</sup>)
- ENSUITE** – 2.450m x 1.475m (3.4m<sup>2</sup>)

**BEDROOM 2** – 2.633m x 3.756m (9.0m<sup>2</sup>)
- BATHROOM** – 2.450m x 1.575 (3.6m<sup>2</sup>)

**UTILITY** – 1.600m x 0.800m (1.3m<sup>2</sup>)
- TERRACE** – 3.589m x 1.300m (49m<sup>2</sup>)

There are some instances where ceiling heights may vary. All measurements taken from the widest point in a room. Please enquire for more information on this.



No1 CASTLEFIELD

# No1CASTLEFIELD - MILL APARTMENT D 2D TYPICAL LAYOUT



Raw urban materials  
enriched by deep  
tones and colours,  
characterised by the  
use of dark metals  
and timbers.

