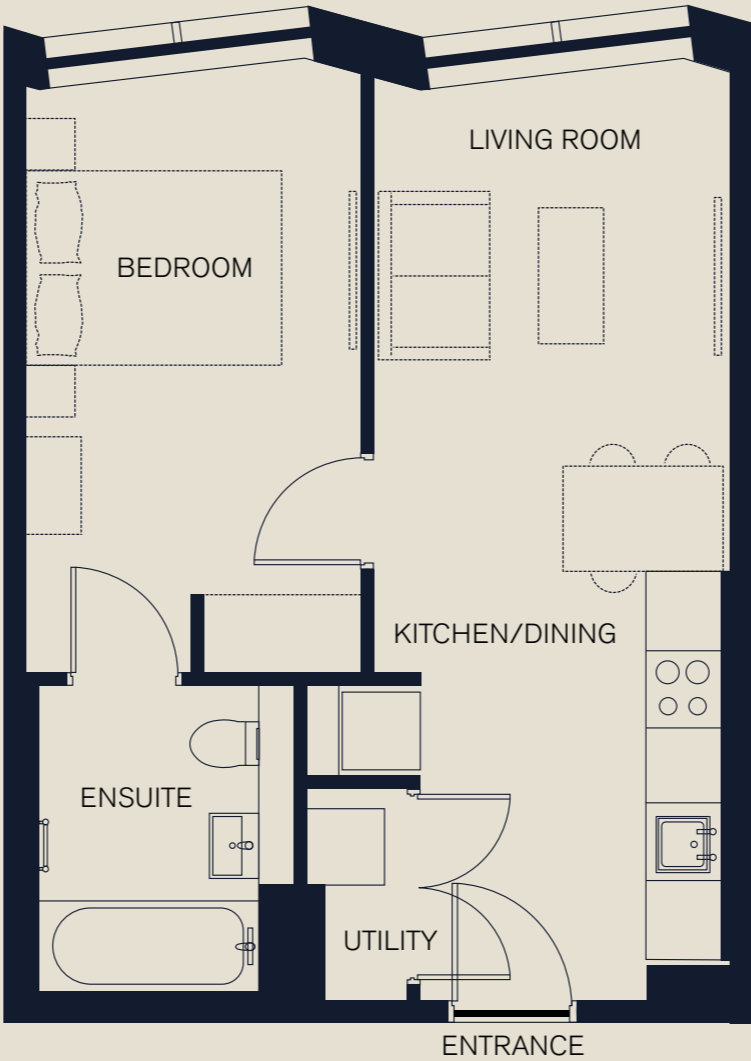


# No1 CASTLEFIELD - TOWER APARTMENT A 1A TYPICAL LAYOUT

The red brick facade of our new No1 Castlefield development, respectfully complements the scale and appearance of the neighbouring buildings while the site is sympathetically framed by a 16 storey tower at the rear, crowned with private roof terraces.



GROUND FLOOR

**LIVING/KITCHEN/DINING** – 6.902m x 2.742m (19.09m<sup>2</sup>)  
**UTILITY** – (1.15m<sup>2</sup>)

**BEDROOM** – 4.522m x 2.574m (11.84m<sup>2</sup>)  
**ENSUITE** – 2.363m x 1.725m (4.46m<sup>2</sup>)

There are some instances where ceiling heights may vary. All measurements taken from the widest point in a room.  
Please enquire for more information on this.



No1 CASTLEFIELD

# No1CASTLEFIELD - TOWER APARTMENT A 1A TYPICAL LAYOUT



A sleek palette with clean white and light finishes throughout, characterised by the use of smooth stainless metals.

