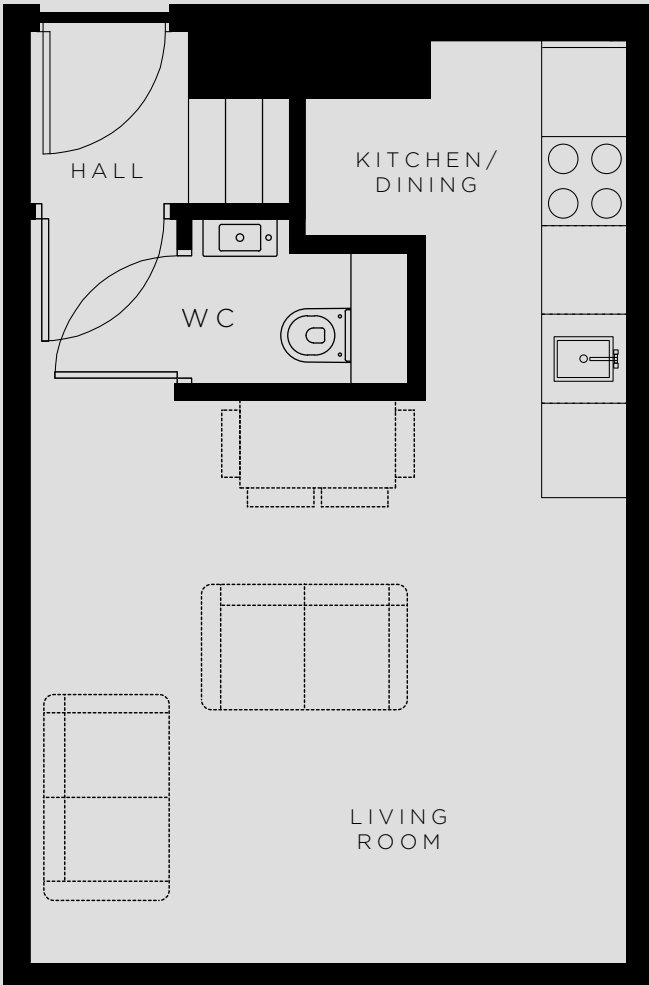
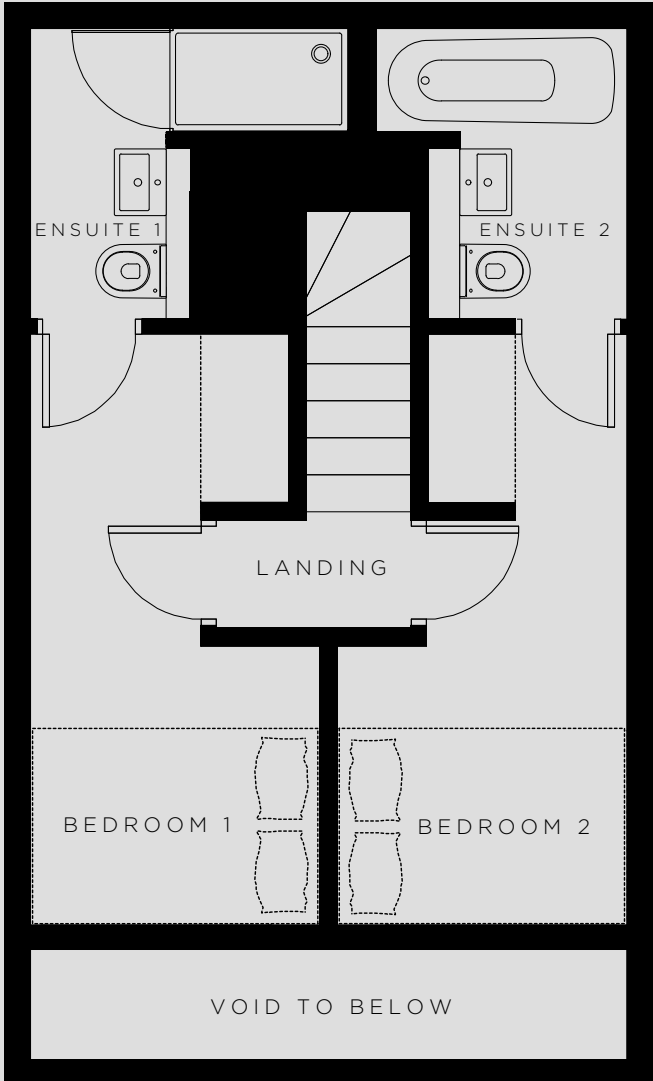


SKY GARDENS - APARTMENT 2F TYPICAL LAYOUT



GROUND FLOOR



FIRST FLOOR

Harnessing the convenience of inner city living with the attractions of appealing outdoor living space, Sky Gardens provides a blueprint for modern, contemporary living.

Living Room - 4.043m x 3.835m
Kitchen/Dining - 4.043m x 2.494m
Bedroom 1 - 1.972m x 3.988m

Bedroom 2 - 1.972m x 3.988m
Ensuite 1 - 2.160m x 1.971m
Ensuite 2 - 1.710m x 1.971m

All measurements taken from the widest point in a room.

There are some instances where ceiling heights may vary. Please enquire for more information on this.

SKY GARDENS
PHASE 2

SKY GARDENS - APARTMENT 2F TYPICAL LAYOUT



Beech paneled walls and Italian concrete effect flooring, combined with a natural colour palette, creating a distinctive design in this scandinavian themed home.

SKY GARDENS

PHASE 2