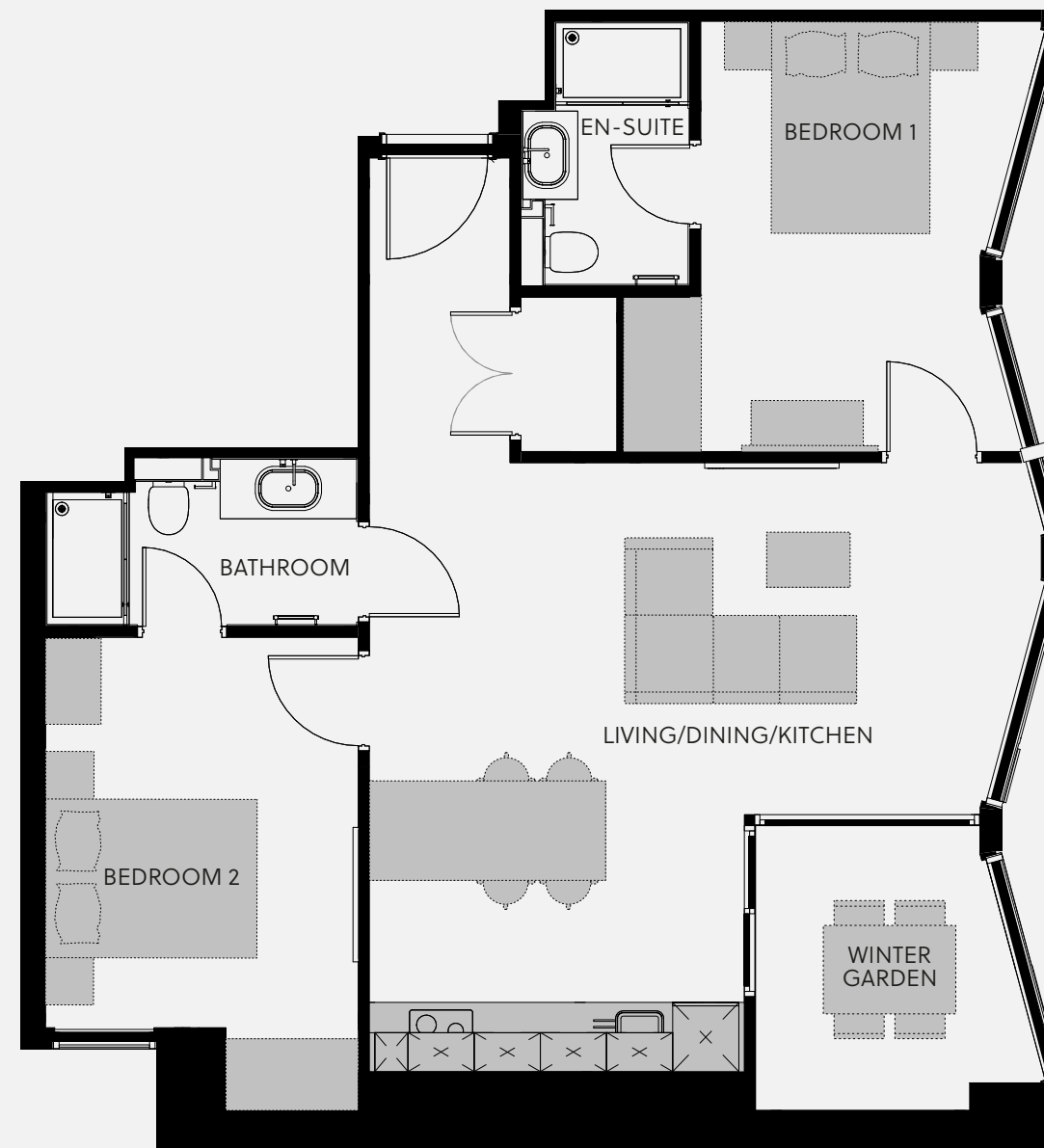


# ST GEORGE'S GARDENS - APARTMENT 2B

## TYPICAL LAYOUT



With unrivalled views over the Grade II listed church from which its name is derived, this stunning new Castlefield development offers a luxurious approach to city centre living.

**Living/Dining/Kitchen** - 5.523m x 6.092m

**Bedroom 1** - 4.440m x 2.531m

**Bedroom 2** - 3.538m x 2.837m

**Bathroom** - 1.530m x 2.837m

**En-Suite** - 2.400m x 1.530

**Utility** - 1.400m x 0.870m

**Winter Garden** - 2.582m x 2.036m

All measurements taken from the widest point in a room.

There are some instances where ceiling heights may vary. Please enquire for more information on this.

**ST GEORGE'S** GARDENS  
PHASE 4

# ST GEORGE'S GARDENS - APARTMENT 2B

## TYPICAL LAYOUT



Walnut accented wall paneling and classic herringbone flooring, complemented by matt black ironmongery adding a contemporary twist to this unique space.

# ST GEORGE'S GARDENS

## PHASE 4