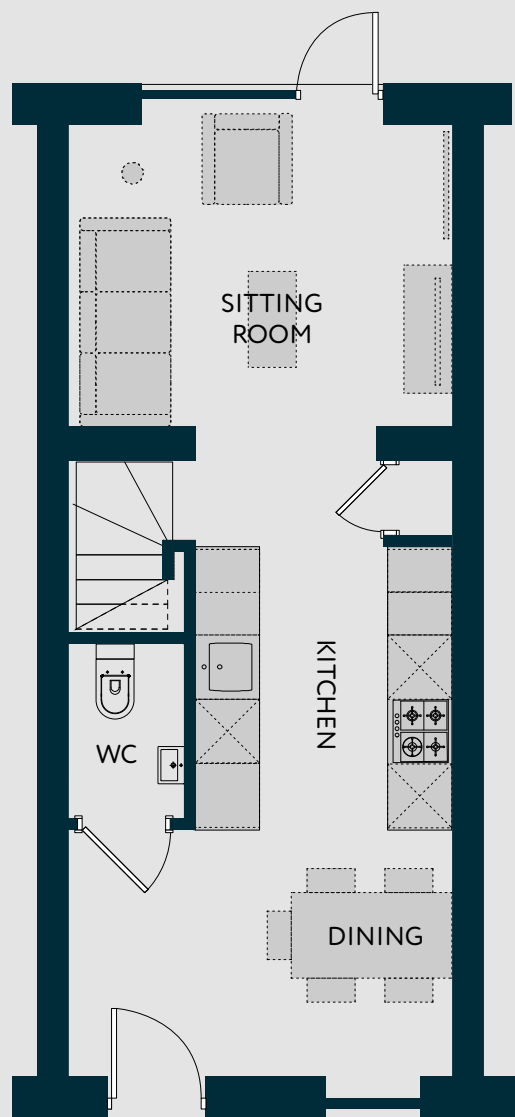
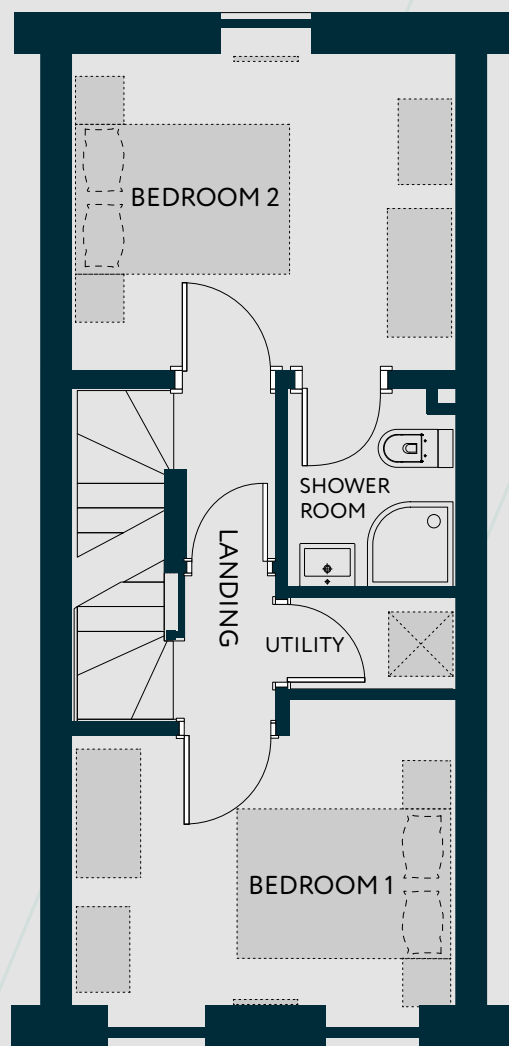


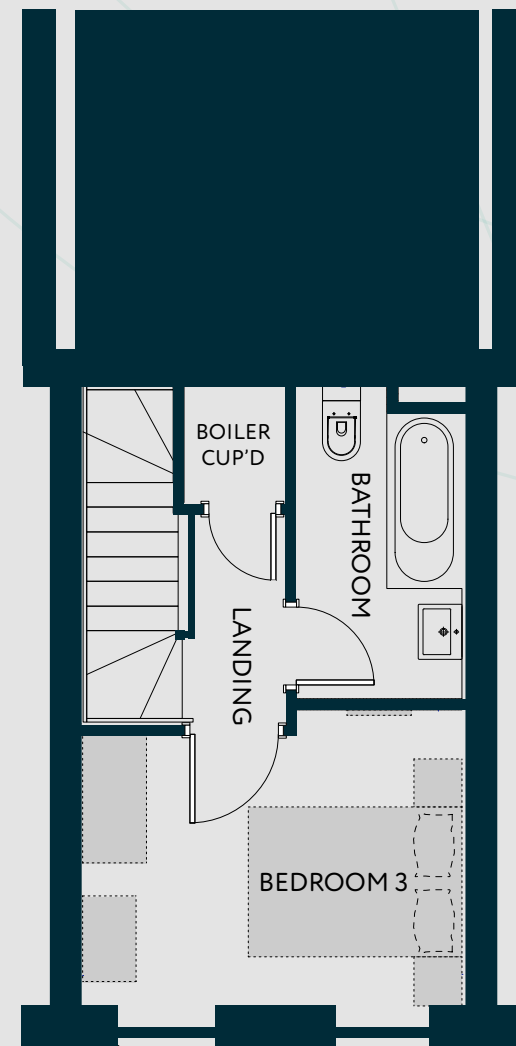
# ELISABETH GARDENS, REDDISH - HOUSE TYPE 3A



GROUND FLOOR



FIRST FLOOR



SECOND FLOOR

Elisabeth Gardens is a suburban community with a cosmopolitan feel, offering commanding views over the Houldsworth Golf Course. Its close proximity to Manchester city centre and nearby transport links help to ensure its position as a community poised to thrive.

- Sitting Room - 3.55m x 2.89m
- Bedroom 1 - 3.55m x 2.88m
- Bedroom 2 - 3.55m x 3.01m
- Bathroom 3 - 3.55m x 2.77m

- Kitchen Dining - 3.55m x 5.82m
- Shower Room - 1.55m x 1.89m
- Bathroom - 1.55m x 2.93m

Ceilings in the new build houses are typically 2.4m high. There are some instances where ceiling heights may vary. Please enquire for more information on this.

ELISABETH  
GARDENS

