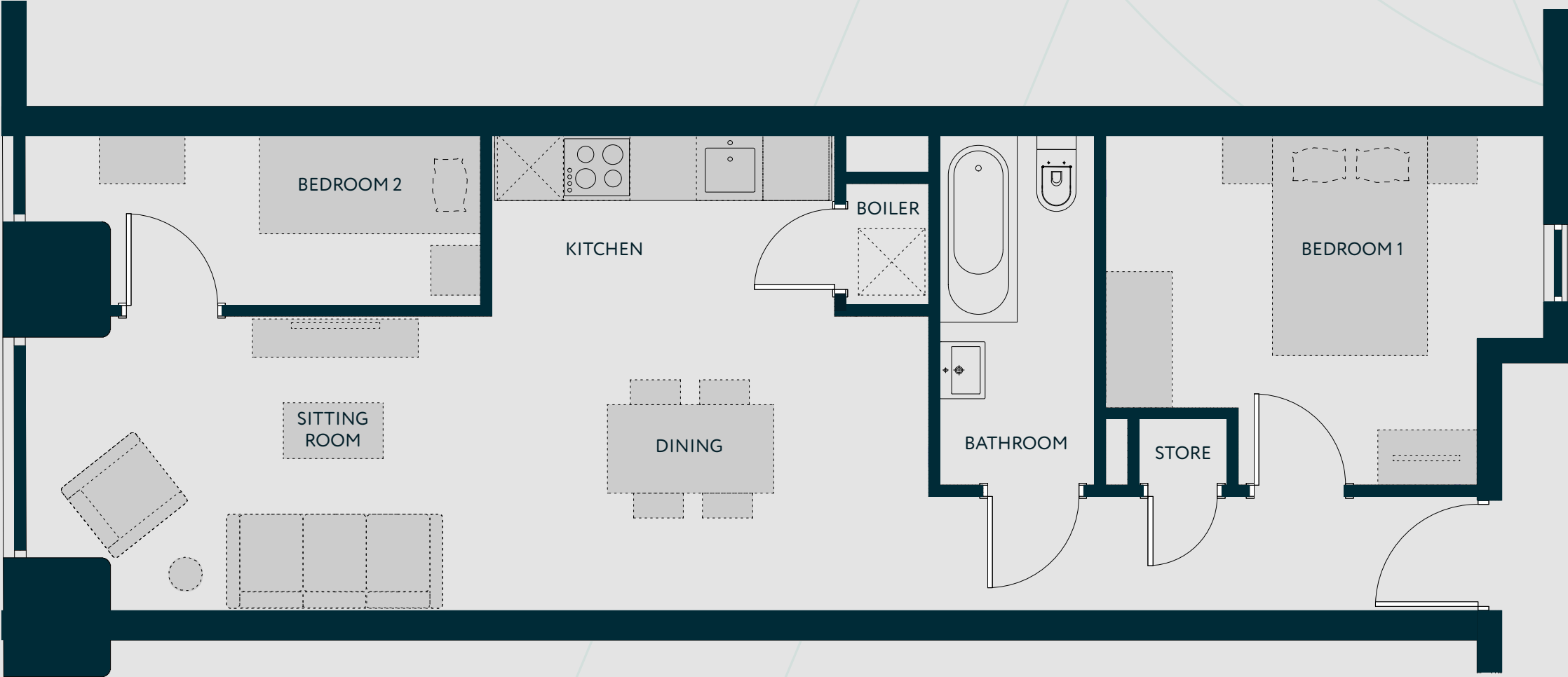


ELISABETH GARDENS, REDDISH - APARTMENT TYPE 2A



Elisabeth Gardens is a suburban community with a cosmopolitan feel, offering commanding views over the Houldsworth Golf Course. Its close proximity to Manchester city centre and nearby transport links help to ensure its position as a community poised to thrive.

Kitchen/Dining/Sitting - 8.02m x 4.32m	Bathroom - 1.40m x 3.18m	There are some instances where ceiling heights may vary. Please enquire for more information on this.
Bedroom 1 - 3.96m x 3.18m		
Bedroom 2 - 3.97m x 1.55m		

ELISABETH
GARDENS

ELISABETH GARDENS, REDDISH - APARTMENT TYPE 2A



Light and contemporary urban spaces, characterised by original exposed features and oak timber floors, complemented by a palette of subtle tones.

ELISABETH
GARDENS